



# OPERATOR'S AND PARTS MANUAL

## *Signature Series*

### PALLET FORKS



**PALADIN**  
LIGHT CONSTRUCTION GROUP

 **BRADCO**

 **FFC**

 **HARLEY**

 **McMILLEN**

 **SWEEPSTER**

*The Power of Combined Excellence*



SERIAL NUMBER: \_\_\_\_\_

MODEL NUMBER: \_\_\_\_\_

Manual Number: OM700

Part Number: 75600

Rev. 2

U.S. PATENT NO. 6,881,023



# TABLE OF CONTENTS

PREFACE .....	3
SAFETY PRECAUTIONS	
SAFETY STATEMENTS.....	4
GENERAL SAFETY PRECAUTIONS .....	4-6
EQUIPMENT SAFETY PRECAUTIONS .....	7
DECALS	
DECAL IDENTIFICATION & REPLACEMENT .....	9
INSTALLATION	
GENERAL INFORMATION .....	11
ATTACHING.....	11
DISCONNECTING PALLET FORK .....	11
FORK TINE INSTALLATION .....	11
ADJUSTING THE FORK TINES .....	12
INSTALLATION OF OPTIONAL ASSEMBLIES .....	12
OPERATION	
GENERAL INFORMATION .....	13
OPERATING INSTRUCTIONS.....	13
SPECIFICATIONS	
SPECIFICATIONS .....	14
LIMITED WARRANTY .....	15
SIGNATURE SERIES PALLET FORKS AND TINE OPTIONS .....	16-17
REPLACEMENT TINE LOCK ASSEMBLIES .....	18-19
OPTIONAL TOW HITCH ASSEMBLY .....	20-21
OPTIONAL AUGER MOUNTING ASSEMBLY.....	22-23
OPTIONAL TWO SPEAR BALE SPIKE ASSEMBLY .....	24-25
OPTIONAL THREE SPEAR BALE SPIKE ASSEMBLY .....	26-27

**THIS PAGE  
IS INTENTIONALLY  
BLANK**

# PREFACE

## GENERAL COMMENTS

Congratulations on the purchase of your new BRADCO product! This product was carefully designed and manufactured to give you many years of dependable service. Only minor maintenance (such as cleaning and lubricating) is required to keep it in top working condition. Be sure to observe all maintenance procedures and safety precautions in this manual and on any safety decals located on the product and on any equipment on which the attachment is mounted.

This manual has been designed to help you do a better, safer job. Read this manual carefully and become familiar with its contents.

**WARNING!**  **Never let anyone operate this unit without reading the "Safety Precautions" and "Operating Instructions" sections of this manual. Always choose hard, level ground to park the vehicle on and set the brake so the unit cannot roll.**

Unless noted otherwise, right and left sides are determined from the operator's control position when facing the attachment.

**NOTE:** The illustrations and data used in this manual were current (according to the information available to us) at the time of printing, however, we reserve the right to redesign and change the attachment as may be necessary without notification.

## BEFORE OPERATION

The primary responsibility for safety with this equipment falls to the operator. Make sure the equipment is operated only by trained individuals that have read and understand this manual. If there is any portion of this manual or function you do not understand, contact your local authorized dealer or the manufacturer.

## SAFETY ALERT SYMBOL



This is the "Safety Alert Symbol" used by this industry. This symbol is used to warn of possible injury. Be sure to read all warnings carefully. They are included for your safety and for the safety of others working with you.

## SERVICE

When servicing your product, remember to use only manufacturer replacement parts. Substitute parts may not meet the standards required for safe, dependable operation.

To facilitate parts ordering, record the model and serial number of your unit in the space provided on the cover of this manual. This information may be obtained from the identification plate located on the product.

The parts department needs this information to insure that you receive the correct parts for your specific model.

## SAFETY STATEMENTS



THIS SYMBOL BY ITSELF OR WITH A WARNING WORD THROUGHOUT THIS MANUAL IS USED TO CALL YOUR ATTENTION TO INSTRUCTIONS INVOLVING YOUR PERSONAL SAFETY OR THE SAFETY OF OTHERS. FAILURE TO FOLLOW THESE INSTRUCTIONS CAN RESULT IN INJURY OR DEATH.



### **DANGER**

THIS SIGNAL WORD IS USED WHERE SERIOUS INJURY OR DEATH WILL RESULT IF THE INSTRUCTIONS ARE NOT FOLLOWED PROPERLY.



### **WARNING**

THIS SIGNAL WORD IS USED WHERE SERIOUS INJURY OR DEATH COULD RESULT IF THE INSTRUCTIONS ARE NOT FOLLOWED PROPERLY.



### **CAUTION**

THIS SIGNAL WORD IS USED WHERE MINOR INJURY COULD RESULT IF THE INSTRUCTIONS ARE NOT FOLLOWED PROPERLY.

### **NOTICE**

NOTICE INDICATES A PROPERTY DAMAGE MESSAGE.

## GENERAL SAFETY PRECAUTIONS

### **WARNING!**

#### **READ MANUAL PRIOR TO INSTALLATION**



Improper installation, operation, or maintenance of this equipment could result in serious injury or death. Operators and maintenance personnel should read this manual, as well as all manuals related to this equipment and the prime mover thoroughly before beginning installation, operation, or maintenance. **FOLLOW ALL SAFETY INSTRUCTIONS IN THIS MANUAL AND THE PRIME MOVER'S MANUAL(S).**



#### **READ AND UNDERSTAND ALL SAFETY STATEMENTS**

Read all safety decals and safety statements in all manuals prior to operating or working on this equipment. Know and obey all OSHA regulations, local laws, and other professional guidelines for your operation. Know and follow good work practices when assembling, maintaining, repairing, mounting, removing, or operating this equipment.



#### **KNOW YOUR EQUIPMENT**

Know your equipment's capabilities, dimensions, and operations before operating. Visually inspect your equipment before you start, and never operate equipment that is not in proper working order with all safety devices intact. Check all hardware to ensure it is tight. Make certain that all locking pins, latches, and connection devices are properly installed and secured. Remove and replace any damaged, fatigued, or excessively worn parts. Make certain all safety decals are in place and are legible. Keep decals clean, and replace them if they become worn or hard to read.

## GENERAL SAFETY PRECAUTIONS

### WARNING!



#### PROTECT AGAINST FLYING DEBRIS

Always wear proper safety glasses, goggles, or a face shield when driving pins in or out, or when any operation causes dust, flying debris, or any other hazardous material.

### WARNING!



#### LOWER OR SUPPORT RAISED EQUIPMENT

Do not work under raised booms without supporting them. Do not use support material made of concrete blocks, logs, buckets, barrels, or any other material that could suddenly collapse or shift positions. Make sure support material is solid, not decayed, warped, twisted, or tapered. Lower booms to ground level or on blocks. Lower booms and attachments to the ground before leaving the cab or operator's station.

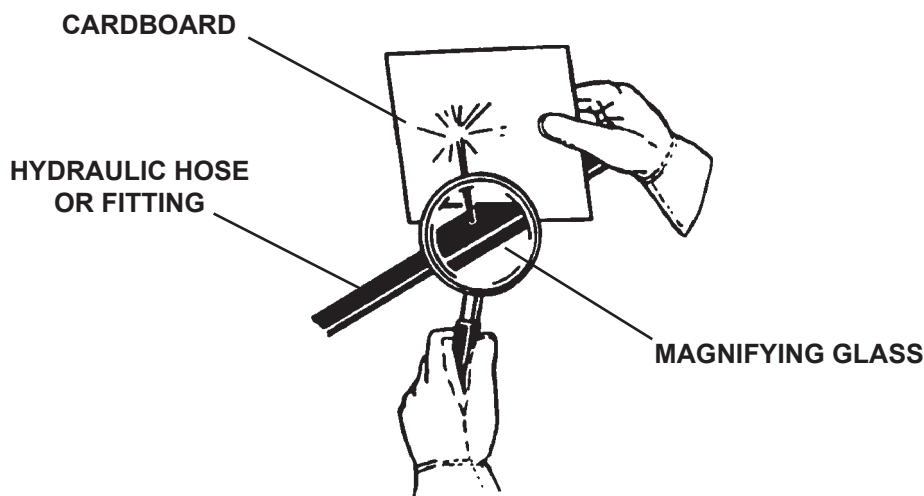
### WARNING!



#### USE CARE WITH HYDRAULIC FLUID PRESSURE

Hydraulic fluid under pressure can penetrate the skin and cause serious injury or death. Hydraulic leaks under pressure may not be visible. Before connecting or disconnecting hydraulic hoses, read your prime mover's operator's manual for detailed instructions on connecting and disconnecting hydraulic hoses or fittings.

- Keep unprotected body parts, such as face, eyes, and arms as far away as possible from a suspected leak. Flesh injected with hydraulic fluid may develop gangrene or other permanent disabilities.
- If injured by injected fluid, see a doctor at once. If your doctor is not familiar with this type of injury, ask him to research it immediately to determine proper treatment.
- Wear safety glasses, protective clothing, and use a piece of cardboard or wood when searching for hydraulic leaks. **DO NOT USE YOUR HANDS!** **SEE ILLUSTRATION.**



## GENERAL SAFETY PRECAUTIONS

### WARNING!



### DO NOT MODIFY MACHINE OR ATTACHMENTS

Modifications may weaken the integrity of the attachment and may impair the function, safety, life, and performance of the attachment. When making repairs, use only the manufacturer's genuine parts, following authorized instructions. Other parts may be substandard in fit and quality. Never modify any ROPS (Roll Over Protection Structure) or FOPS (Falling Object Protective Structure) equipment or device. Any modifications must be authorized in writing by the manufacturer.

### WARNING!



### SAFELY MAINTAIN AND REPAIR EQUIPMENT

- Do not wear loose clothing or any accessories that can catch in moving parts. If you have long hair, cover or secure it so that it does not become entangled in the equipment.
- Work on a level surface in a well-lit area.
- Use properly grounded electrical outlets and tools.
- Use the correct tools for the job at hand. Make sure they are in good condition for the task required.
- Wear the protective equipment specified by the tool manufacturer.



### SAFELY OPERATE EQUIPMENT

Do not operate equipment until you are completely trained by a qualified operator in how to use the controls, know its capabilities, dimensions, and all safety requirements. See your machine's manual for these instructions.

- Keep all step plates, grab bars, pedals, and controls free of dirt, grease, debris, and oil.
- Never allow anyone to be around the equipment when it is operating.
- Do not allow riders on the attachment or the prime mover.
- Do not operate the equipment from anywhere other than the correct operator's position.
- Never leave equipment unattended with the engine running, or with this attachment in a raised position.
- Do not alter or remove any safety feature from the prime mover or this attachment.
- Know your work site safety rules as well as traffic rules and flow. When in doubt on any safety issue, contact your supervisor or safety coordinator for an explanation.



# EQUIPMENT SAFETY PRECAUTIONS

## WARNING!



### KNOW WHERE UTILITIES ARE

Observe overhead electrical and other utility lines. Be sure equipment will clear them. When digging, call your local utilities for location of buried utility lines, gas, water, and sewer, as well as any other hazard you may encounter.



### OPERATING THE PALLET FORK

- Operate only from the operator's station with seatbelt properly latched.
- Do not exceed the recommended lifting capacity of any approved fork tines or prime mover.
- Do not lift round bales without installing the option bale spike.
- Do not use the fork tines for prying or any purpose other than lifting.
- Reduce speed when driving over rough terrain, on a slope, or turning, to avoid overturning the vehicle.
- An operator must not use drugs or alcohol, which can change his or her alertness or coordination. An operator taking prescription or over-the-counter drugs should seek medical advice on whether or not he or she can safely operate equipment.
- Secure the load properly. Unsecured loads can fall unexpectedly. When transporting a load, keep the forks as close to the ground as possible.
- Never lift a load with one fork.
- Keep lifting surface of the forks level at all times.
- Before exiting the prime mover, lower the pallet forks to the ground, apply the brakes, turn off the prime mover's engine, and remove the key.



### TRANSPORTING THE PALLET FORK

- Travel only with the attachment as close to the ground as possible. Drive slowly over rough ground and on slopes.
- When driving on public roads use safety lights, reflectors, Slow Moving Vehicle signs etc., to prevent accidents. Check local government regulations that may affect you.
- Do not drive close to ditches, excavations, etc., cave in could result.
- Do not smoke when refueling the prime mover. Allow room in the gas tank for expansion. Wipe up any spilled fuel. Secure cap tightly when done.



### MAINTAINING THE PALLET FORK

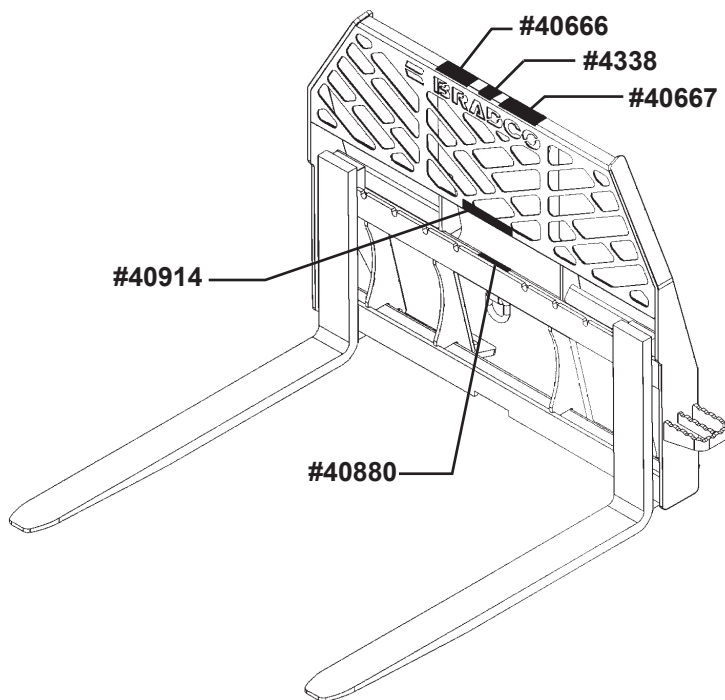
- Before performing maintenance, lower the attachment to the ground, apply the brakes, turn off the engine, and remove the key.
- Worn, damaged, or illegible safety decals must be replaced. New safety decals can be ordered from BRADCO.
- Never work under a raised attachment.

**THIS PAGE  
IS INTENTIONALLY  
BLANK**

# DECALS

## DECAL IDENTIFICATION & REPLACEMENT

The diagram on this page shows the location of the decals used on the BRADCO Signature Series Pallet Forks. The decals are identified by their part numbers, with reductions of the actual decals following the diagram. Use this information to order replacements for lost or damaged decals. Be sure to read all decals before operating the attachment. They contain information you need to know for both safety and longevity.

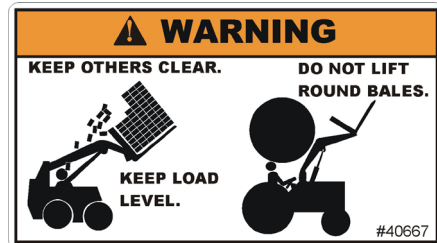


**Signature Series**

PART #40913  
SIGNATURE SERIES DECAL



PART #40666  
WARNING DECAL



PART #40667  
WARNING

**U.S. PATENT  
NO. 6,881,023**

#40880

PART #40880  
PATENT #6881023



PART #4338  
MADE IN U.S.A.

**IMPORTANT:** Keep all safety signs clean and legible. Replace all missing, illegible, or damaged safety signs. When replacing parts with safety signs attached, the safety signs must also be replaced.

**REPLACING SAFETY SIGNS:** Clean the area of application with nonflammable solvent, then wash the same area with soap and water. Allow the surface to fully dry. Remove the backing from the safety sign, exposing the adhesive surface. Apply the safety sign to the position shown in the diagram above and smooth out any bubbles.

**THIS PAGE  
IS INTENTIONALLY  
BLANK**

# INSTALLATION

## GENERAL INFORMATION

The BRADCO “Signature Series” Pallet Forks were designed to be easy to use and maintain. The pallet fork mounts to the toolbar/quick attach mechanism for easy installation.

**WARNING!** Never exceed the recommended lifting capacity of any approved fork tines or the prime mover. Use the correct fork tines for the job at hand.



**WARNING!** To Avoid Serious Personal Injury, make sure the pallet fork is securely latched to the attachment mechanism of your unit. Failure to do so could result in separation of the attachment from the unit.



## ATTACHING

Install the pallet fork frame by following your power unit operator's manual for proper installation of an attachment. Make sure the fork frame is securely latched to the prime mover.

## DISCONNECTING PALLET FORK

On firm, level ground, lower the lift arms against the frame and place the pallet fork on the ground.

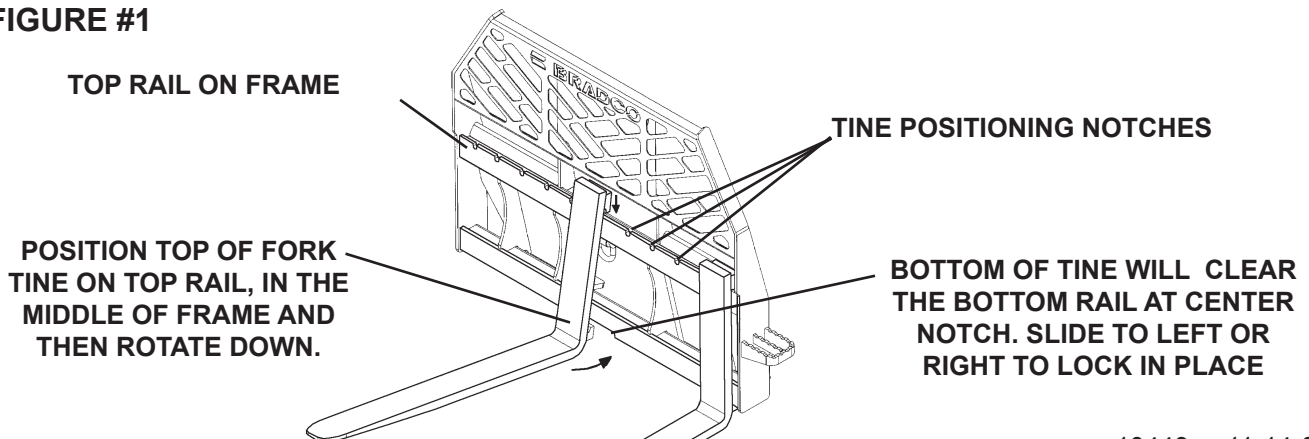
Follow your power unit operator's manual for detaching (removing) an attachment.

**IMPORTANT:** Follow all safety shutdown procedures listed in your power unit operator's manual before leaving the operator's station.

## FORK TINE INSTALLATION

With loader arms lowered and completely rolled back, shut down the power unit following the safety shutdown procedure for your unit. (If installing negative drop tines the loader arms may need to be raised slightly to avoid contacting the ground during installation.) Ensure that the locking assembly on the tine is in the unlocked (UP) position. Place the top of the fork on the top rail in the middle of the frame and then rotate down. Slide the fork to the side to seat it on the frame and, using the locking assembly that is on your tine, lock in place. Install the following tine(s) in the same fashion. Make sure the locking assembly has been set into a notch on the top rail and therefore securing the tine to the frame. See Figure #1

**FIGURE #1**



10449 11-14-05

# INSTALLATION

## ADJUSTING THE FORK TINES

With the loader arms lowered and completely rolled back, shut down the power unit following the safety shutdown procedure for your unit. (If tines are still in contact with the ground the loader arms may need to be raised just enough to eliminate contact.) From the right side of your pallet fork, adjust the position of the right fork tine by either lifting the lock assembly into the vertical position or turning the knob to the unlock position and sliding the fork tine to the desired location by either pushing or pulling on the vertical portion of the fork tine. Restore the locking assembly to either the horizontal position or turn the knob to lock the fork tine in place. Make sure that the latch has been set into a notch and therefore securing the tine to the frame.

Move to the left side of the pallet fork frame and repeat the adjustment procedure to the left fork tine. Make sure that the left tine is the same distance from the center of the frame as the right tine.

**WARNING!** Never exceed the recommended lifting capacity of any approved fork tines or the prime mover.



**NOTE:** Fork tine capacities are pounds per pair at a 24" load center. (The center of gravity of the allowable loads must be applied within the first 24" of the fork tines when measured from the front face of the vertical section of the fork tine out toward the tip of the horizontal section of the fork tine.)

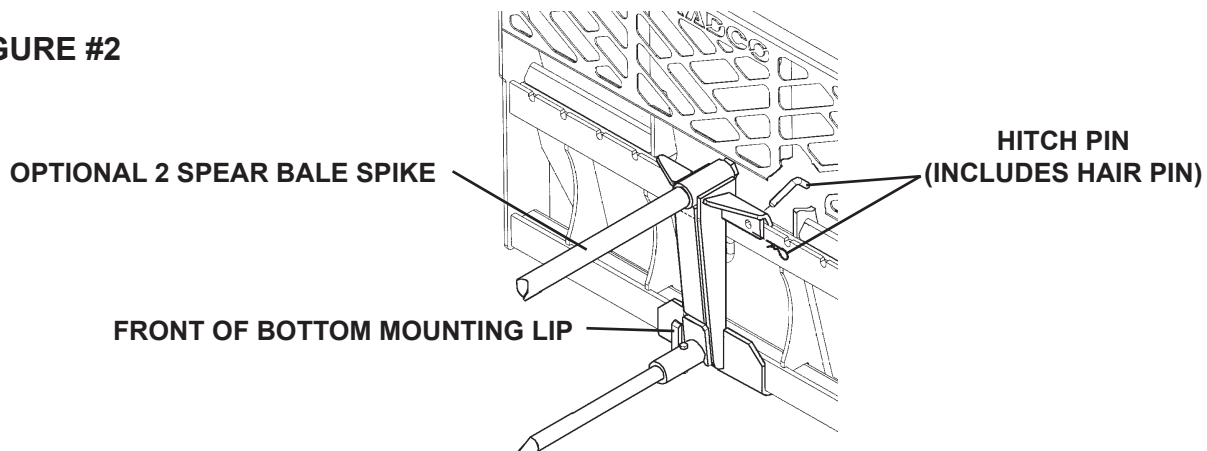
## INSTALLATION OF OPTIONAL ASSEMBLIES

When installing the tow hitch, auger mount, 2 spear bale spike or the 3 spear bale spike onto your fork frame you must first remove the existing fork tines.

Position the top lip of the attachment over the top mounting bar on the fork frame with the bottom mounting lip in the center of the frame. Rotate the hitch down and slide sideways to lock the bottom on and then lock into place using the hitch pin provided. See Figure #2

Once the auger mount is attached to the fork frame, bolt the cradle (sold separately) to the auger mount using the .50" hardware supplied. Install the swivel to the mounting using pin #22255 provided and then secure the auger drive unit to the swivel with the pivot pin supplied with the drive unit.

**FIGURE #2**



# OPERATION

## GENERAL INFORMATION

The BRADCO Signature Series pallet forks are designed to handle up to 6,600 lb capacity depending on the tine option. The heavy duty brickguard offers see through visibility for tine placement, added strength along with a smooth surface for protection against load damage.

The Signature Series pallet forks include an exclusive (patented) load retention ring for securing pallet fork loads or to pull loads out of trucks as well as many other uses.

**WARNING!** Operate the attachment only when properly seated at the operator's station. Any other method could result in serious personal injury or death.



Do not exceed the recommended lifting capacity of any approved fork tines or the prime mover. Keep lifting surface of the forks level at all times. Do not use the fork tines for prying or any purpose other than lifting.

Do not lift round bales without first installing the optional bale spike, or try to lift a load with one fork.

Reduce speed when driving over rough terrain, on a slope, or turning, to avoid overturning the vehicle.

Secure the load properly. Unsecured loads can fall unexpectedly. When transporting a load, keep the forks as close to the ground as possible.

Before exiting the prime mover, lower the pallet forks to the ground, turn off the prime mover's engine, remove the key and apply the brakes.

## OPERATING INSTRUCTIONS

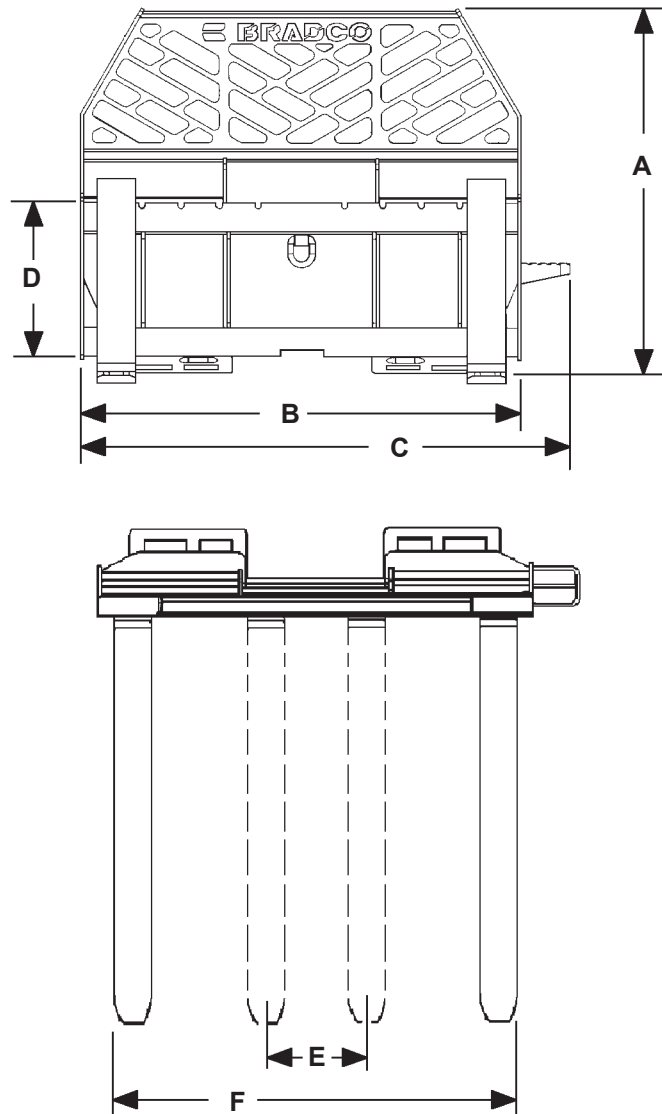
1. Approach the load in such a fashion that the weight will be centered between the fork tines. The heaviest side should be closest to the fork frame and not near the tips of the fork tines.
2. Before lifting make certain the fork tines are completely under the load and level.

**NOTE: A Load Retention "D" Ring is provided on the fork frame for securing loads to prevent them from becoming dislodged unintentionally.**

3. Lift the load slightly to make sure the load is stable. If load appears unstable, lower and reposition the tines to achieve full stability.
4. Raise the load to the MINIMUM height required for the terrain.
5. During transportation; keep the fork tines level, gradually accelerate and brake, slow down before turning and avoid any obstacles, bumps or holes.

Check load Frequently to ensure stability.

## SPECIFICATIONS



SPECIFICATIONS		45"	60"
A.	Overall Height. . . . .	38.75"	38.75"
B.	Overall Width (Without Step) . . . . .	45.88"	60.75"
C.	Overall Width With Step . . . . .	50.75"	65.75"
D.	ITA Category II Fork Mounting . . . . .	16.00"	16.00"
E.	Adjustable Tine Spacing - Minimum (Center) . . . . .	9.00"	9.00"
F.	Adjustable Tine Spacing - Maximum (Outside) . . . . .	44.00"	60.00"



# Limited Warranty

Except for the Excluded Products as described below, all new products are warranted to be free from defects in material and/or workmanship during the Warranty Period, in accordance with and subject to the terms and conditions of this Limited Warranty.

1. Excluded Products. The following products are excluded from this Limited Warranty:

(a) Any cable, part that engages with the ground (i.e. sprockets), digging chain, bearing, teeth, tamping and/or demolition head, blade cutting edge, pilot bit, auger teeth and broom brush that either constitutes or is part of a product.

(b) Any product, merchandise or component that, in the opinion of Paladin Light Construction<sup>1</sup>, has been (i) misused; (ii) modified in any unauthorized manner; (iii) altered; (iv) damaged; (v) involved in an accident; or (vi) repaired using parts not obtained through Paladin Light Construction.

2. Warranty Period. The Limited Warranty is provided only to those defects that occur during the Warranty Period, which is the period that begins on the first to occur of: (i) the date of initial purchase by an end-user, (ii) the date the product is first leased or rented, or (iii) the date that is six (6) months after the date of shipment by Paladin Light Construction as evidenced by the invoiced shipment date (the "Commencement Date") and ends on the date that is twelve (12) months after the Commencement Date.

3. Terms and Conditions of Limited Warranty. The following terms and conditions apply to the Limited Warranty hereby provided:

(a) Option to Repair or Replace. Paladin Light Construction shall have the option to repair or replace the product.

(b) Timely Repair and Notice. In order to obtain the Limited Warranty, (i) the product must be repaired within thirty (30) days from the date of failure, and (ii) a claim under the warranty must be submitted to Paladin Light Construction in writing within thirty (30) days from the date of repair.

(c) Return of Defective Part or Product. If requested by Paladin Light Construction, the alleged defective part or product shall be shipped to Paladin Light Construction at its manufacturing facility or other location specified by Paladin Light Construction, with freight PRE-PAID by the claimant, to allow Paladin Light Construction to inspect the part or product.

Claims that fail to comply with any of the above terms and conditions shall be denied.

## **LIMITATIONS AND EXCLUSIONS.**

**THIS LIMITED WARRANTY IS IN LIEU OF ALL OTHER WARRANTIES, EXPRESS OR IMPLIED, INCLUDING WITHOUT LIMITATION THE WARRANTIES OF MERCHANTABILITY, FITNESS FOR A PARTICULAR PURPOSE AND ANY WARRANTY BASED ON A COURSE OF DEALING OR USAGE OF TRADE.**

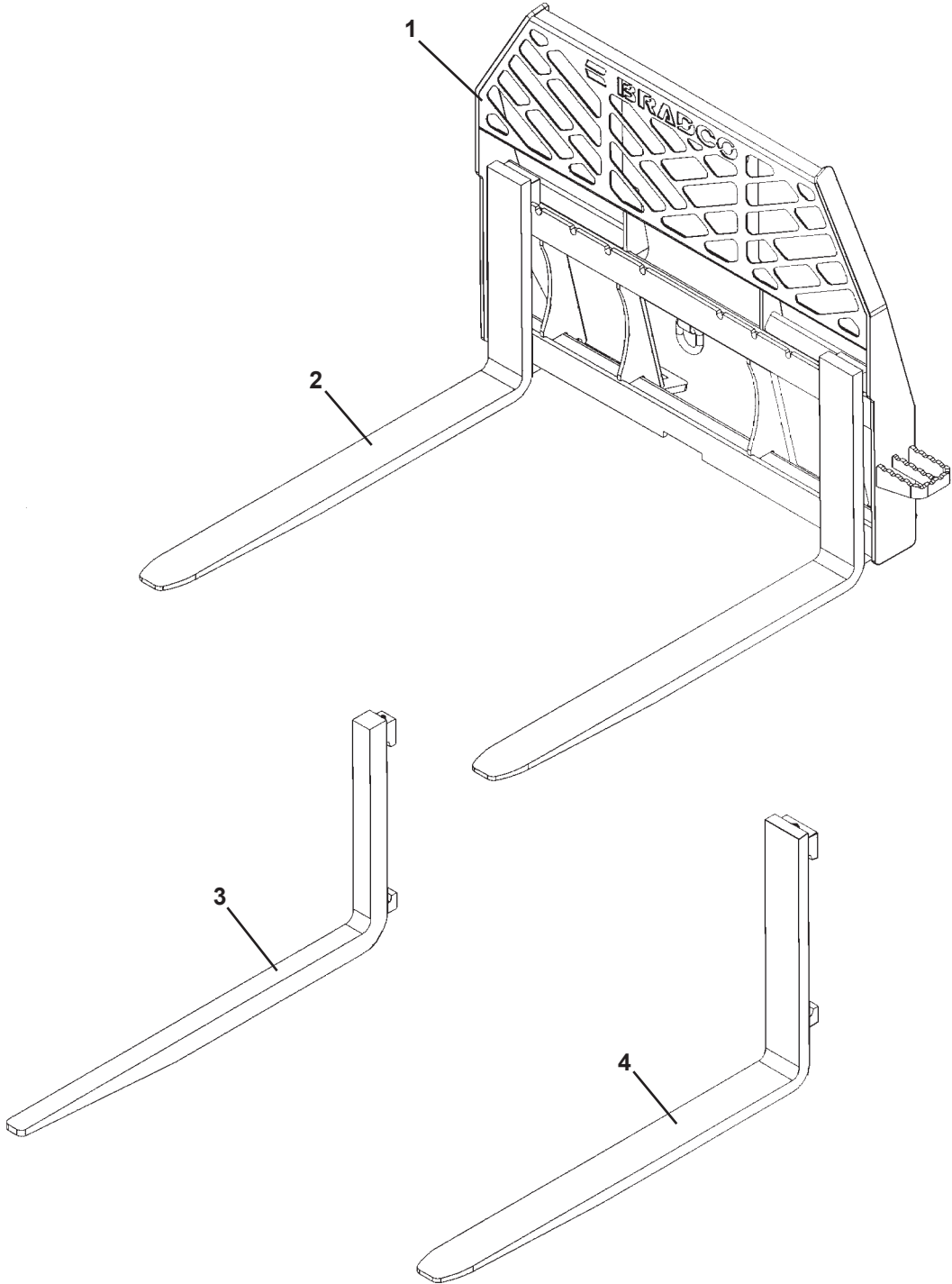
**IN NO EVENT SHALL PALADIN LIGHT CONSTRUCTION BE LIABLE FOR CONSEQUENTIAL OR SPECIAL DAMAGES.**

**IN NO EVENT SHALL PALADIN LIGHT CONSTRUCTION BE LIABLE FOR ANY LOSS OR CLAIM IN AN AMOUNT IN EXCESS OF THE PURCHASE PRICE, OR, AT THE OPTION OF PALADIN LIGHT CONSTRUCTION, THE REPAIR OR REPLACEMENT, OF THE PARTICULAR PRODUCT ON WHICH ANY CLAIM OF LOSS OR DAMAGE IS BASED. THIS LIMITATION OF LIABILITY APPLIES IRRESPECTIVE OF WHETHER THE CLAIM IS BASED ON BREACH OF CONTRACT, BREACH OF WARRANTY, NEGLIGENCE OR OTHER CAUSE AND WHETHER THE ALLEGED DEFECT IS DISCOVERABLE OR LATENT.**

<sup>1</sup>Attachment Technologies Inc., a subsidiary of Paladin Brands Holding, Inc. (PBHI) is referred to herein as Paladin Light Construction.

February 10, 2010

# SIGNATURE SERIES PALLET FORKS AND TINE OPTIONS



# SIGNATURE SERIES PALLET FORKS AND TINE OPTIONS

<u>ITEM</u>	<u>REQ'D</u>	<u>PART NO.</u>	<u>DESCRIPTION</u>
1	1	16870*	45" "BRADCO" Universal Skid-Steer Hitch
1	1	18265	60" "BRADCO" Universal SKid-Steer Hitch

---

## STANDARD AND HEAVY DUTY TINES

### 3300# Maximum Lift Capacity

2	1	102028	42" Pallet Fork Tines (Pair) (#102027 Single Tine)
2	1	102030	48" Pallet Fork Tines (Pair) (#102029 Single Tine)

### 4000# Maximum Lift Capacity

2	1	67603	36" Pallet Fork Tines (Pair) (#68645 Single Tine)
2	1	66302	42" Pallet Fork Tines (Pair) (#85214 Single Tine)
2	1	67604	48" Pallet Fork Tines (Pair) (#85215 Single Tine)

### 5500# Maximum Lift Capacity

2	1	102032	42" Pallet Fork Tines (Pair) (#102031 Single Tine)
2	1	102034	48" Pallet Fork Tines (Pair) (#102033 Single Tine)

### 6000# Maximum Lift Capacity

2	1	85962	42" Pallet Fork Tines (Pair) (#85961 Single Tine)
2	1	85994	48" Pallet Fork Tines (Pair) (#85993 Single Tine)

### 6200# Maximum Lift Capacity

2	1	12678	60" Pallet Fork Tines (Pair) (#12677 Single Tine)
2	1	12509	72" Pallet Fork Tines (Pair) (#17983 Single Tine)

### 6600# Maximum Lift Capacity

2	1	102038	48" Pallet Fork Tines (Pair) (#102037 Single Tine)
---	---	--------	--

---

## BLOCK TINES

3	1	11995	1.5" X 2" X 48" Class II Block Tines (set of 6)
3	1	32984	2" X 2" X 48" Class II Block Tines (set of 4)

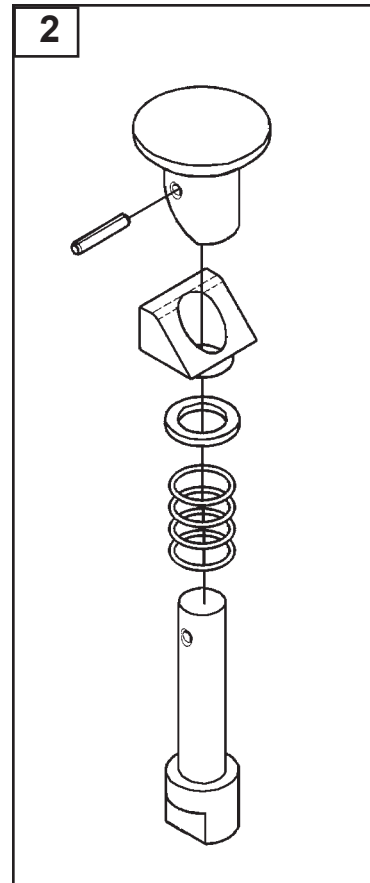
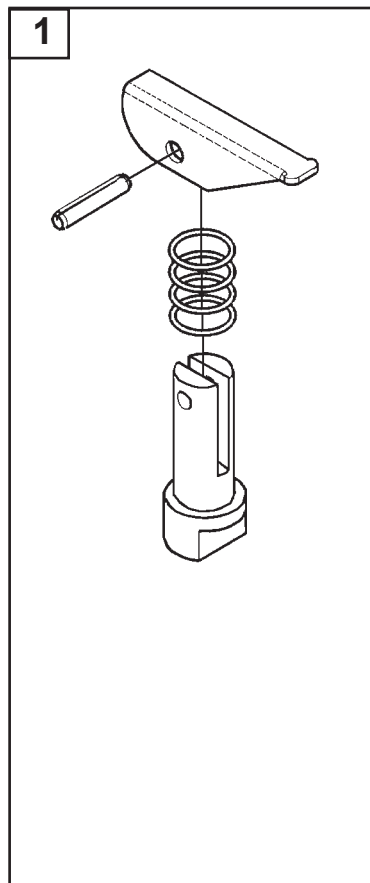
---

## NEGATIVE DROP MAXIMUM LIFT CAPACITY 3930# TINES

4	1	18327	1.38" X 4" X 42" Class II Drop Tines (Pair)
4	1	18329	1.38" X 4" X 48" Class II Drop Tines (Pair)

\* Contact BRADCO or your nearest dealer any tine options not listed, to order personalized "Signature" fork frames and for all mountings other than universal.

## REPLACEMENT TINE LOCK ASSEMBLIES

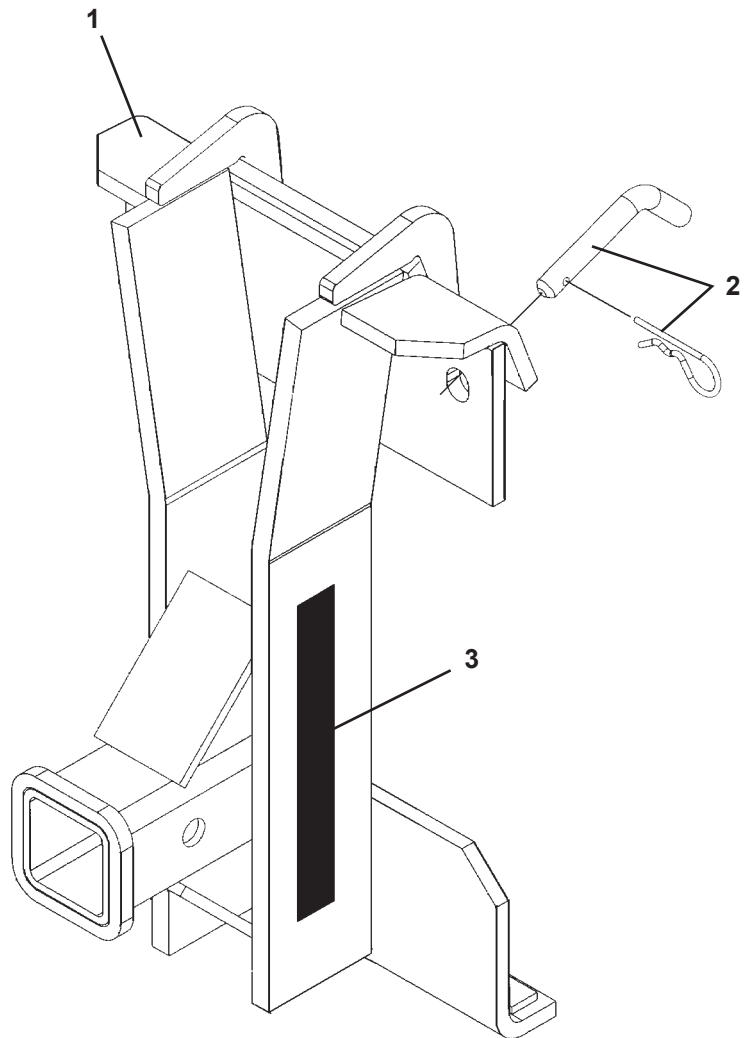


## REPLACEMENT TINE LOCK ASSEMBLIES

<u>ITEM</u>	<u>REQ'D</u>	<u>PART NO.</u>	<u>DESCRIPTION</u>
1	-	67860	Latch Lever Lock Assembly
2	-	102506	Round Knob Lock Assembly

# OPTIONAL TOW HITCH ASSEMBLY

ASSEMBLY #100899



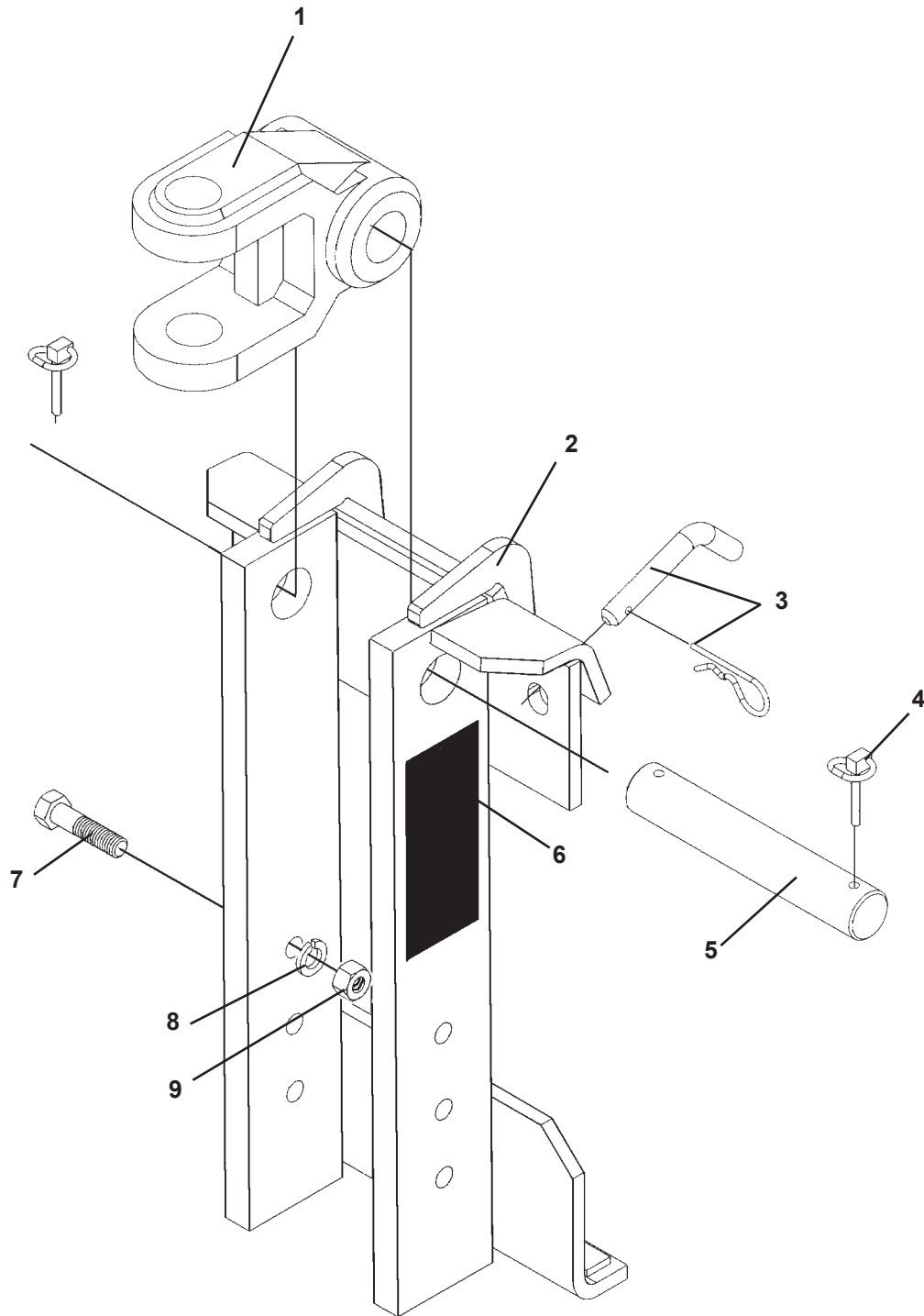
# OPTIONAL TOW HITCH ASSEMBLY

ASSEMBLY #100899

<u>ITEM</u>	<u>REQ'D</u>	<u>PART NO.</u>	<u>DESCRIPTION</u>
1	1	100900	Tow Hitch
2	1	89951	Hlitch Pin (Includes Hair Pin)
3	2	40179	Bradco Vertical Logo

# OPTIONAL AUGER MOUNTING ASSEMBLY

## ASSEMBLY #100898



### **WARNING**

BEFORE DISMOUNTING LOWER MAST AND SAFELY STOW AUGER.  
 ALWAYS CRADLE AUGER WHEN MOVING FROM HOLE TO HOLE.  
 ALWAYS REMOVE AUGER WHEN TRANSPORTING TO AND FROM SITE.  
 NEVER PUT AUGER IN A PRY POSITION.  
 FAILURE TO FOLLOW THESE INSTRUCTIONS COULD RESULT IN  
 SERIOUS INJURY OR DAMAGE.

#22673

10440 11-11-05

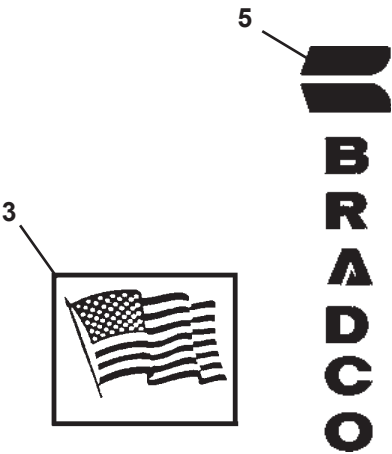
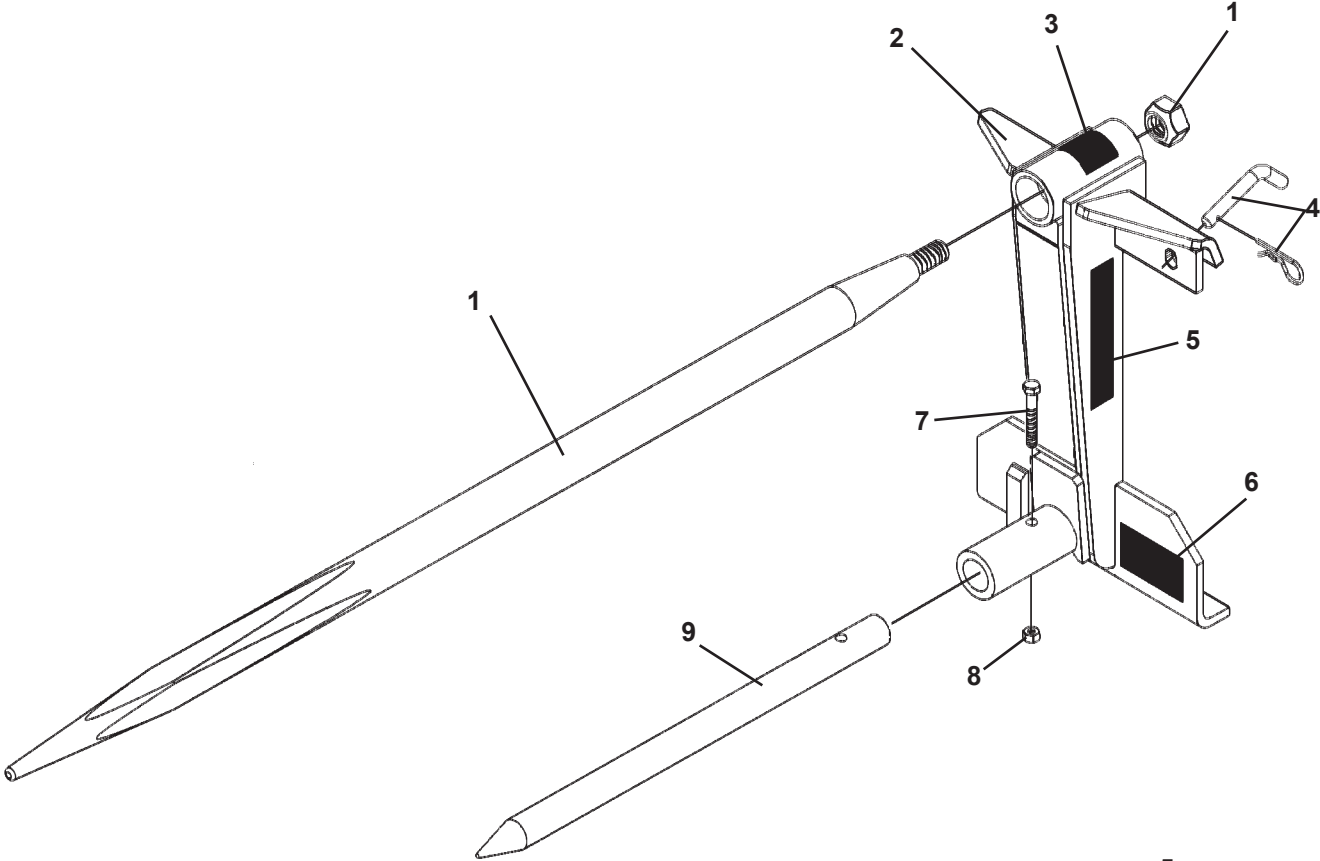


## OPTIONAL AUGER MOUNTING ASSEMBLY

ASSEMBLY #100898

<u>ITEM</u>	<u>REQ'D</u>	<u>PART NO.</u>	<u>DESCRIPTION</u>
1	1	21694	Swivel
2	1	100893	Auger Mount
3	1	17251	Hltch Pin (Includes Hair Pin)
4	2	21169	Klik Pin
5	1	22255	Pivot Pin
6	1	22673	Warning Decal
7	4	1092	.50" UNC X 2.00" Hex Capscrew
8	4	1505	.50" Lock Washer
9	4	1228	.50" UNC Hex Nut

**OPTIONAL TWO SPEAR BALE SPIKE ASSEMBLY**  
ASSEMBLY #17253



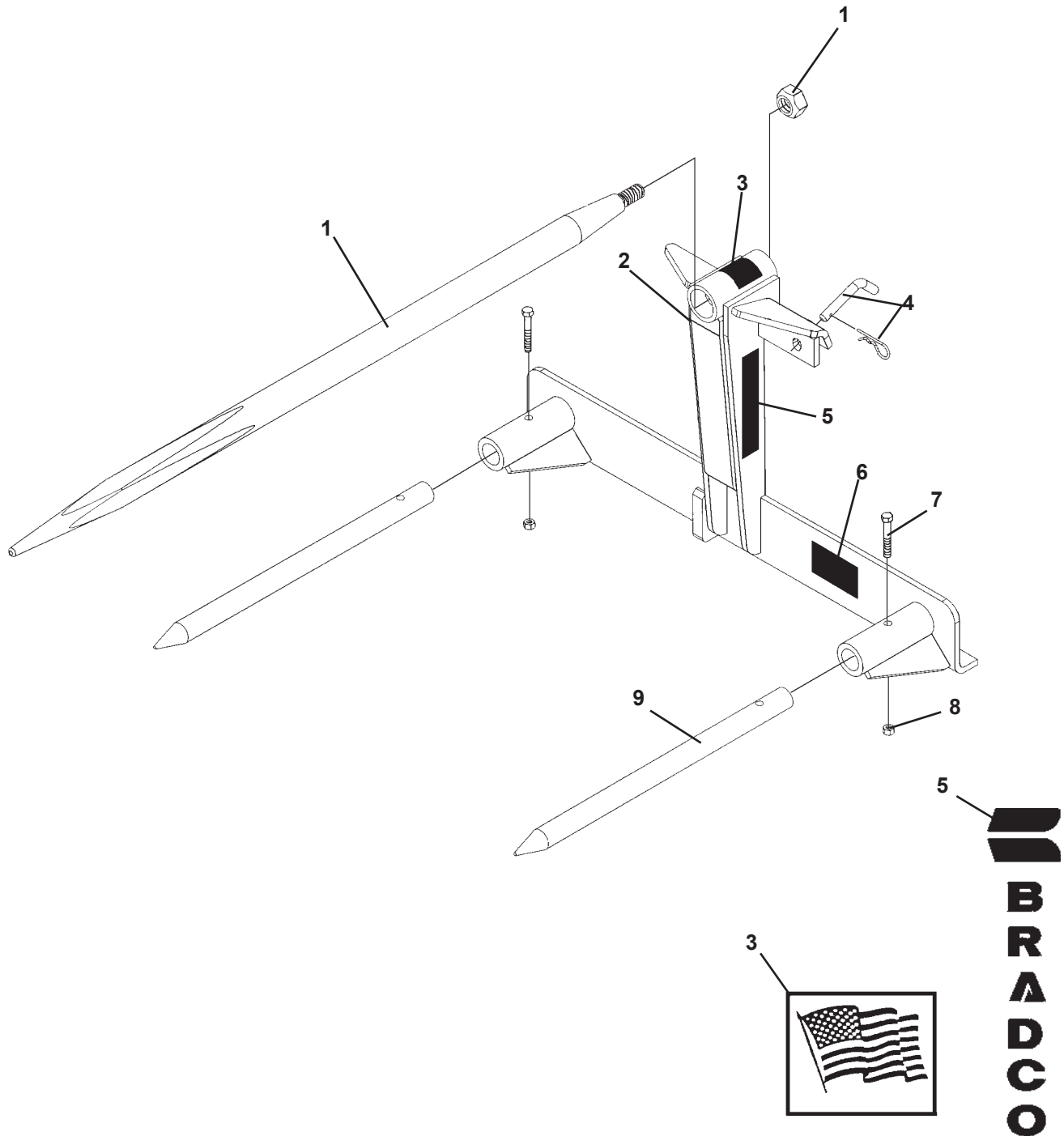
# OPTIONAL TWO SPEAR BALE SPIKE ASSEMBLY

## ASSEMBLY #17253

<u>ITEM</u>	<u>REQ'D</u>	<u>PART NO.</u>	<u>DESCRIPTION</u>
1	1	14018	49" Bale Tine (Includes Nut)
2	1	17254	Bale Spike Mount
3	1	4338	Made in U.S.A. Decal
4	1	17251	Hitch Pin (Includes Hair Pin)
5	2	40179	Bradco Vertical Logo
6	1	---	Serial Tag Location
7	1	1049	.38" UNC X 2.50" Hex Capscrew
8	1	1837	.38" UNC Deformed Lock Nut
9	1	16016	Bale Spike

# OPTIONAL THREE SPEAR BALE SPIKE ASSEMBLY

## ASSEMBLY #17240



10444 11-11-05

# OPTIONAL THREE SPEAR BALE SPIKE ASSEMBLY

## ASSEMBLY #17240

<u>ITEM</u>	<u>REQ'D</u>	<u>PART NO.</u>	<u>DESCRIPTION</u>
1	1	14018	49" Bale Tine (Includes Nut)
2	1	17241	Bale Spike Mount
3	1	4338	Made in U.S.A. Decal
4	1	17251	Hitch Pin (Includes Hair Pin)
5	2	40179	Bradco Vertical Logo
6	1	---	Serial Tag Location
7	2	1049	.38" UNC X 2.50" Hex Capscrew
8	2	1837	.38" UNC Deformed Lock Nut
9	2	16016	Bale Spike